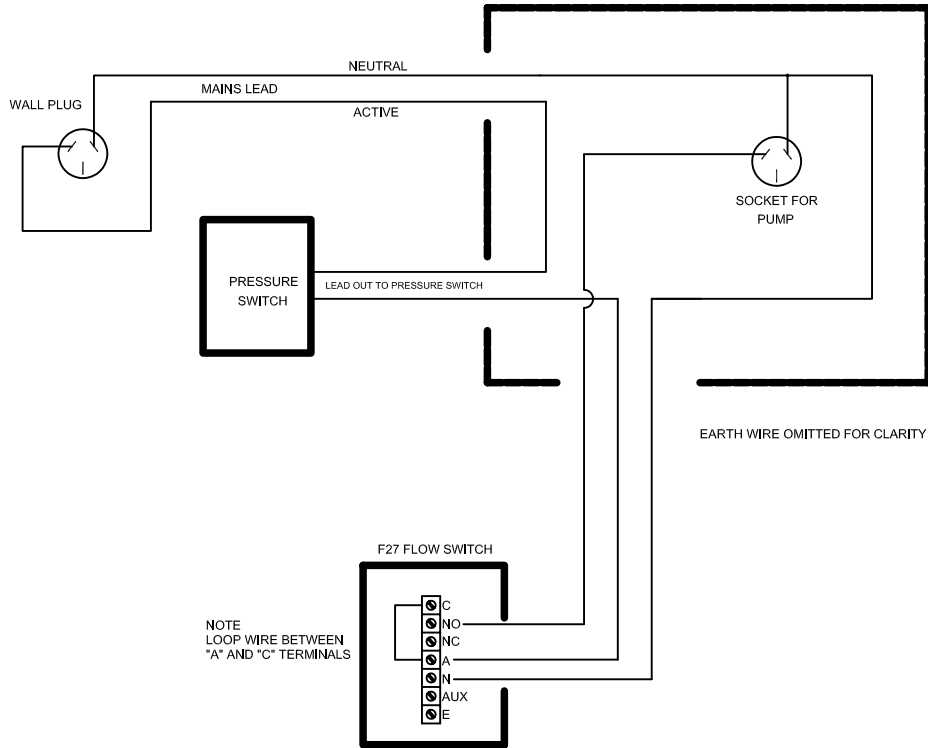


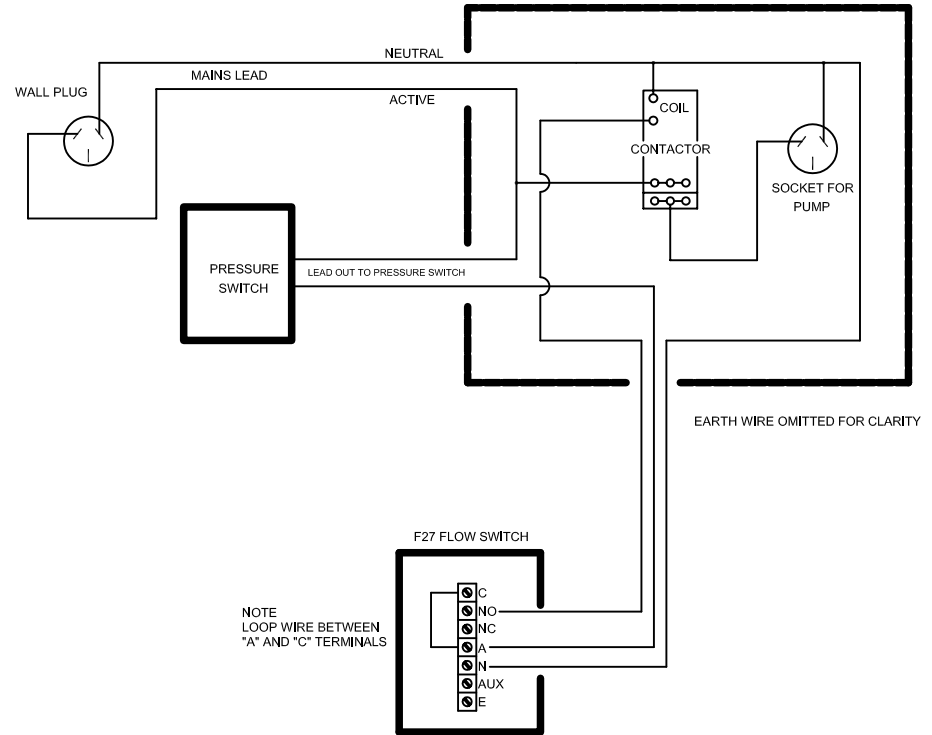
F27 PRESSURE SYSTEM

SYSTEMS SHOWN ARE PRESSURE START, PRESSURE STOP, WITH AUTOMATIC DRY RUN PROTECTION

FOR SMALL PUMPS, UP TO 0.75kW (1 HP) THE F27 FLOW SWITCH CAN BE CONNECTED DIRECTLY BETWEEN THE PRESSURE SWITCH AND THE PUMP MOTOR, AS SHOWN BELOW.



FOR PUMPS LARGER THAN 0.75kW, A CONTACTOR SHOULD BE PLACED BETWEEN THE F27 FLOW SWITCH AND THE PUMP MOTOR. THE CONTACTOR WOULD NORMALLY HAVE A THERMAL OVERLOAD MODULE FITTED TO GIVE ADDED PROTECTION TO THE PUMP. THE CIRCUIT BELOW SHOWS ONLY THE ACTIVE SUPPLY TO THE PUMP BEING SWITCHED BY THE CONTACTOR. THE NEUTRAL CAN ALSO BE CUT IF REQUIRED, USING ONE OF THE CONTACTORS UNUSED CONTACTS.



KELCO ENGINEERING Pty Ltd
 Phone 02 99056425
 Fax 02 99056420
 Email sales@kelco.com.au