

## PT16 PRESSURE TRANSMITTER

4 to 20mA at 0 to 16 Bars (0 to 230 psi)



AUSTRALIAN MADE

### APPLICATIONS

- CONTROL OF VARIABLE SPEED DRIVES
- GENERAL PROCESS CONTROL

### FEATURES

- HIGH ACCURACY
- 4 to 20 mA OUTPUT
- WIDE TEMPERATURE RANGE
- PRECISION CERAMIC PRESSURE TRANSDUCER
- STAINLESS AND POLYPROPYLENE CONSTRUCTION
- SUITABLE FOR SEA WATER USE
- TOUGH RELIABLE CONSTRUCTION
- WEATHERPROOF HOUSING IP67

*The PT16 pressure transmitter is a rugged solid-state device that will generate an accurate 4 to 20mA signal when installed in an instrumentation loop. It will provide a linear signal across its full pressure range at loop voltages from 12V to 36V DC. It is ideal for use with variable speed drive pumps.*

### INTRODUCTION

When installed in an instrumentation loop, the PT16 pressure transmitter will provide a linear 4 to 20mA signal that is directly proportional to the applied gauge pressure. The PT16 pressure transmitter is suitable for use in loop circuits operating at 12 to 36V DC.

### CONSTRUCTION

The PT16 pressure transmitter is corrosion resistant. It is constructed from high impact glass reinforced polypropylene, ceramic and 316 stainless steel. It is ideal for use in potable water; aggressive bore water, seawater and a huge variety of chemical solutions including most acids and alkalis.

# TECHNICAL DATA

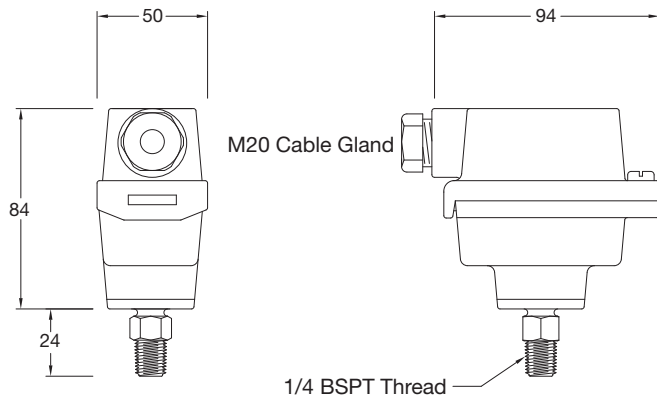
## PROTECTION

Reverse polarity protected	Yes, bi-directional loop connection
RF protected	Yes, RF protection built in
Earthed	Yes, earth terminal provided
Over voltage protected	Yes, up to 60V DC
Calibration	Factory calibrated

## OPERATING ENVIRONMENT

Ambient Temperature Range	1°C to 50°C
Liquid Temperature Range	1°C to 60°C, See note below
Ingress Protection Rating	IP67
Loop Supply	12 to 36V DC
Maximum Operating Pressure	16 Bars (230 psi)

## DIMENSIONS



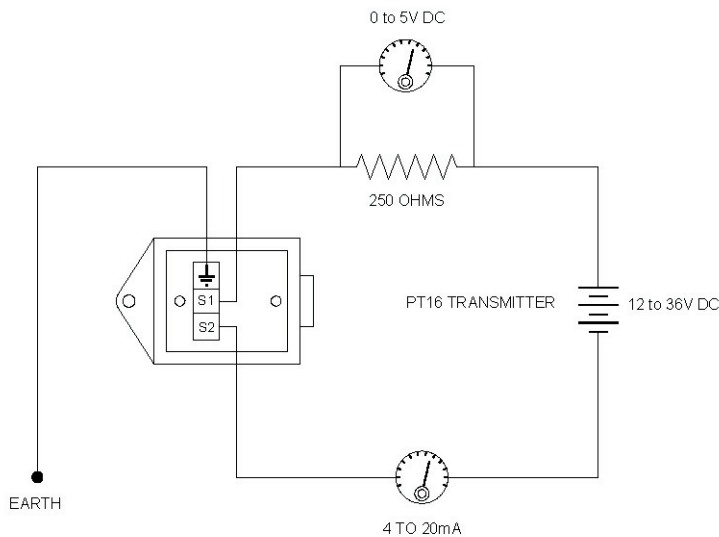
## OPERATING RANGE

Accuracy	+/- 0.10% Full Scale at 0 to 60°C
Temperature range, ambient	0 to 50°C
Liquid temperature range	0 to 60°C
Pressure range	0 to 16 Bars (0 to 230 psi)
Burst pressure	32 Bars (460 psi) minimum

**NOTE in the interests of safety the PT16 pressure transmitter must NOT be used in hot water applications (>60°C).**

**The PT16 pressure transmitter is designed to operate at pressures up to 16 Bars (230 psi) and must not be used in applications where either the static or dynamic pressure exceeds this rating.**

## BASIC LOOP CIRCUIT



## WARRANTY

The Kelco PT16 pressure transmitter is protected by a 12 months return to base warranty. Full details of our warranty can be downloaded from:- <http://www.kelco.com.au/menu/information/warranty-statement/>

MADE IN AUSTRALIA BY

**KELCO Engineering Pty Ltd**

ABN 20 002 834 844

Head Office and Factory: 9/9 Powells Road BROOKVALE 2100 AUSTRALIA

Postal Address: PO Box 496 BROOKVALE NSW 2100

Phone: +61 2 9905 6425 Fax: +61 2 9905 6420

Email: sales@kelco.com.au Web: www.kelco.com.au

**PLEASE NOTE:** Kelco Engineering Pty Ltd reserves the right to change the specification of this product without notice. Kelco Engineering Pty Ltd accepts no liability for personal injury or economic loss as a consequence of the use of this product. All rights reserved copyright Kelco Engineering Pty Ltd © 2010